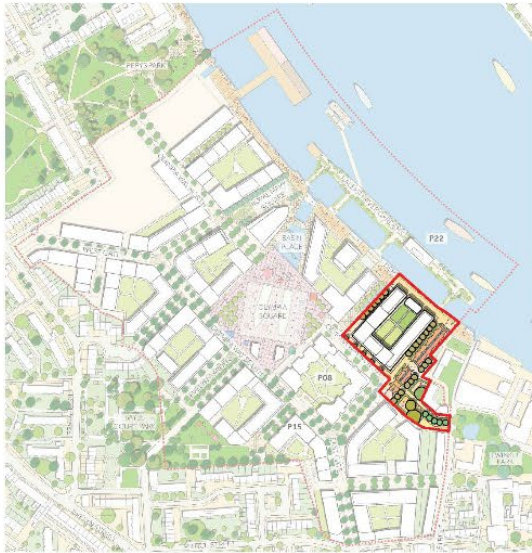


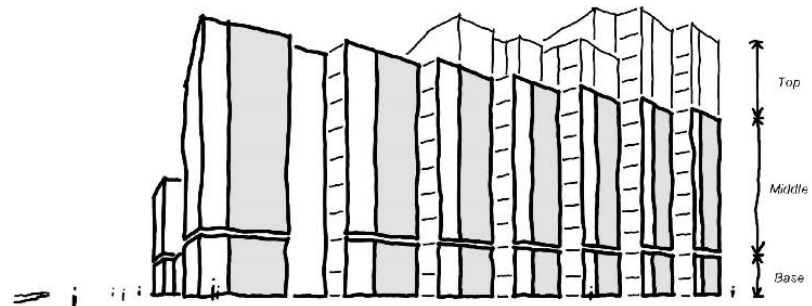
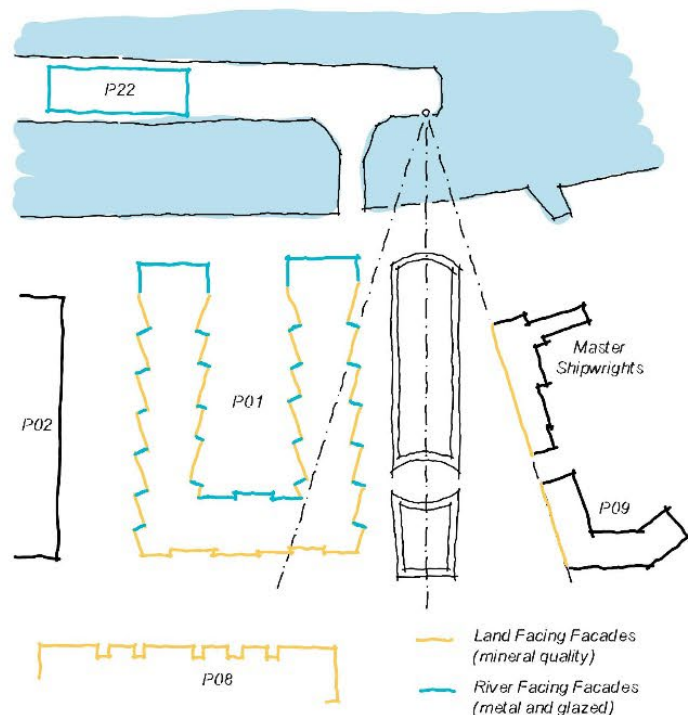
# Convoys Wharf - Plot P01

## Building Design



The design of P01 is driven by the heritage of the site (the historic dockyard buildings), the existing historical context (the grade 2 listed Master Shipwrights building) and the emerging context (including the consented P08 and P22 buildings). The materials, form and orientation of the building are inspired by these contextual elements. P01 delivers the following;

- **247 homes** offering a mix of 1, 2 & 3 bed apartments
- **690m<sup>2</sup> of publicly accessible leisure space** including a gym, pool and cafe at ground level overlooking the river.
- **Landscaping & new public realm** including Royal Caroline Square, playspace between P09 and P14 and the first phase of the Thames Path connecting to P22 and the jetty.



Elevation- View from Plot 2





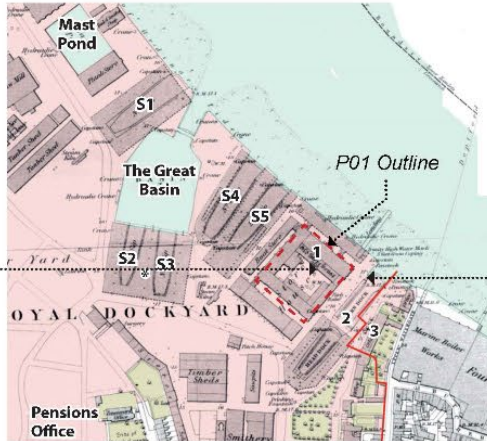
# Convoys Wharf - Plot P01

## Building Design

The design of P01 has been inspired by the rich heritage of the original dockyard buildings. The Tudor Storehouse was one of the first buildings on site and over time was surrounded by a larger complex of buildings known as the Great Storehouse. The concept for the riverfront elevation reflects this historical narrative by capturing the arched motifs of the original Tudor Storehouse within the massing. Following a design review panel, the heritage references to the land facing facades have been enhanced reflecting the quality and weight of the original stone dockyard gates.



Tudor Storehouse Arches



Historic Map of the Dockyard



Historic Stone Dockyard Gates



Leisure Centre Elevation inspired by the arched motifs of the Tudor Storehouse



Large format stone materiality at ground level inspired by the historic stone dockyard gates



Riverfront Elevation - View from the Jetty





# Convoys Wharf - Plot P01

## Landscape & Public Realm

Plot P01 includes a substantial piece of public realm and play offer. The main open space being Royal Caroline Square is upwards of 2500m<sup>2</sup> of public gardens and civic space. It will include a contemporary neighbourhood garden space and linking piazza that jointly will celebrate the hidden archaeology of the double dry dock beneath. Sensitive hard & soft landscape materials, street furniture typologies and way-finding responding to the maritime heritage of the site. 1200m<sup>2</sup> of equipped play evoking memories of the Ship Building legacy of the Dry Dock will adjoin the main piazza space.



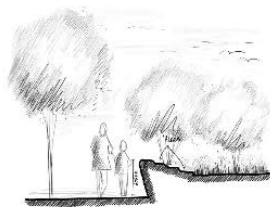
1200m<sup>2</sup> of equipped play



View towards the river from the play area



Dry Dock (Boston USA)



Garden Edge



Landscape Masterplan



Elevated View North Towards the River Thames