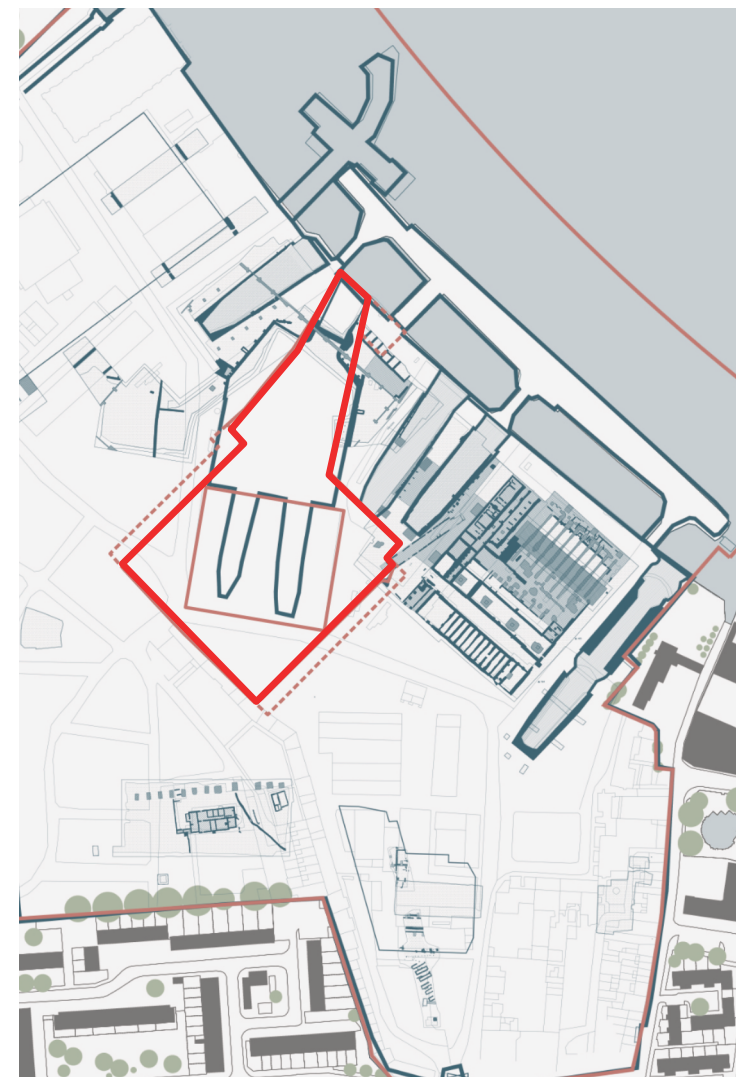


Convoys Wharf - Plot P07

Renovating the Olympia Building



Site Location Plan



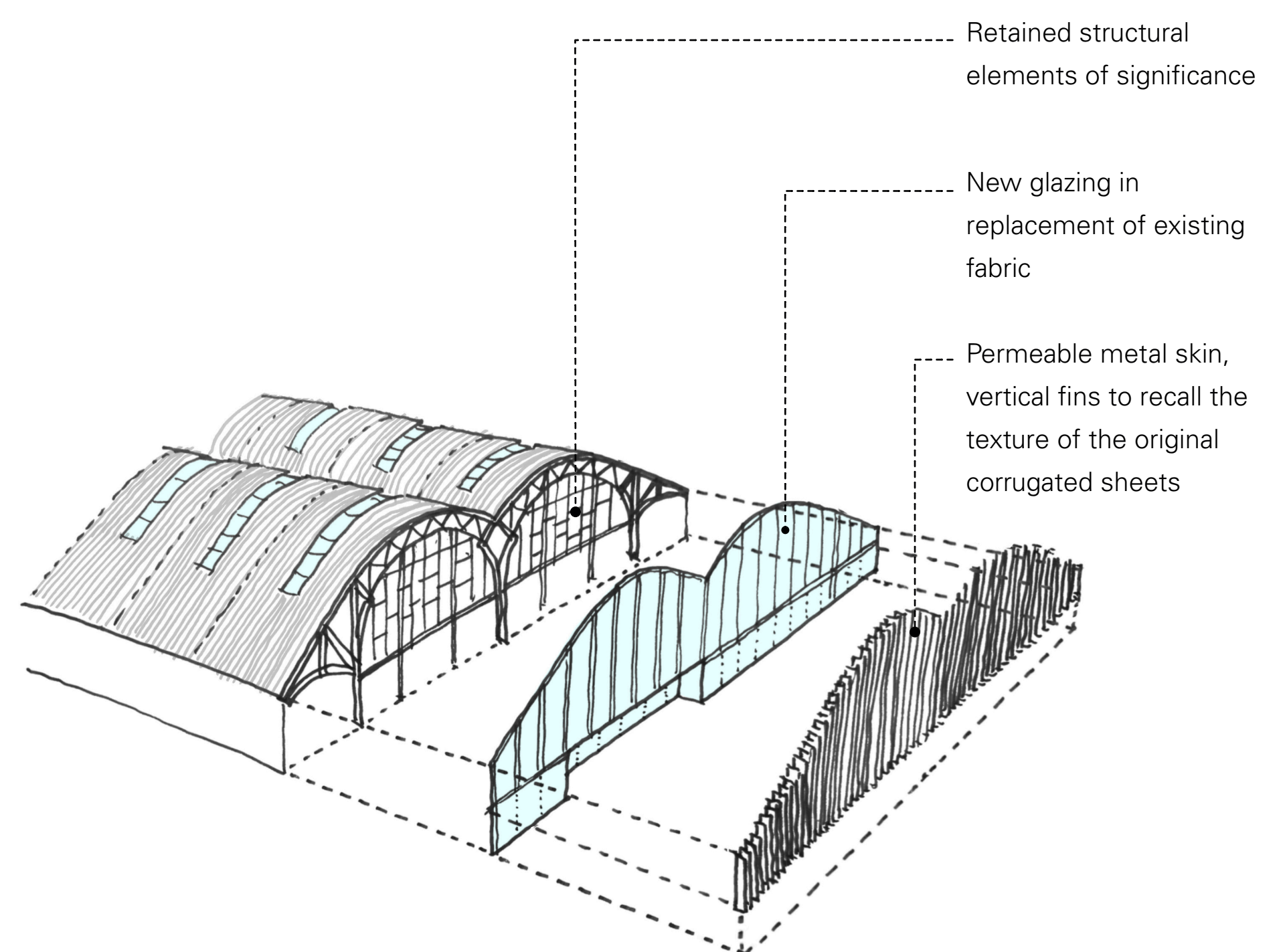
Archaeology Plan

Plot 07 is envisaged as the beating heart of Convoys Wharf. The striking Grade II Listed Olympia Building will be renovated and re-purposed to provide a mix of public uses such as leisure, retail, and food and drink offerings.

Quality public realm will surround the building complementing the activity inside.



Pictures of the Olympia Building's Existing Condition



The renovation will be heritage led. A new envelope will celebrate the history of the building, the functional industrial spirit of the iron cladding will be echoed with similar materiality but adopting a contemporary language and reinforcing the beautiful, strong form of the existing structure.



Impression from the South of Olympia Square

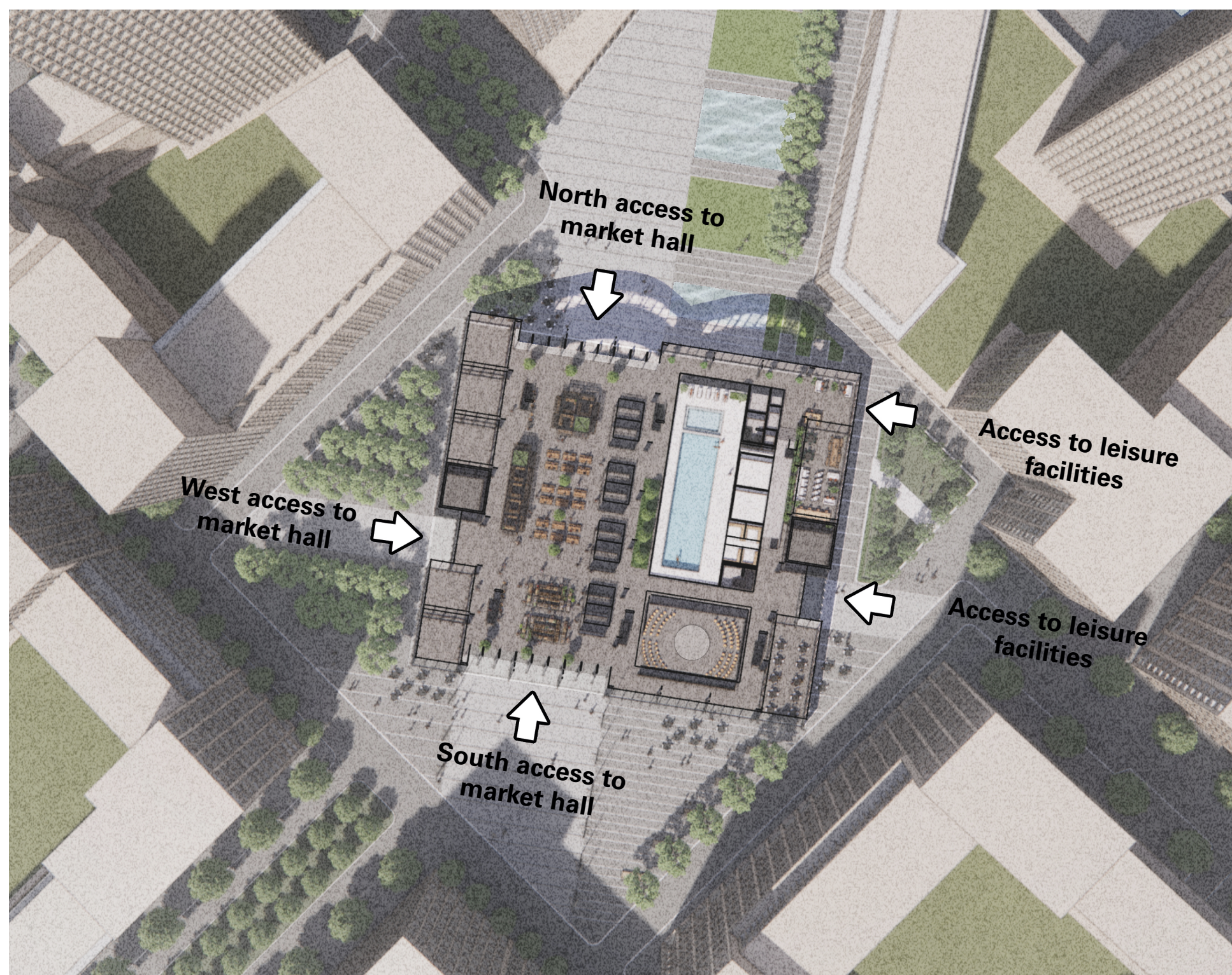


Impression from the North of Olympia Square



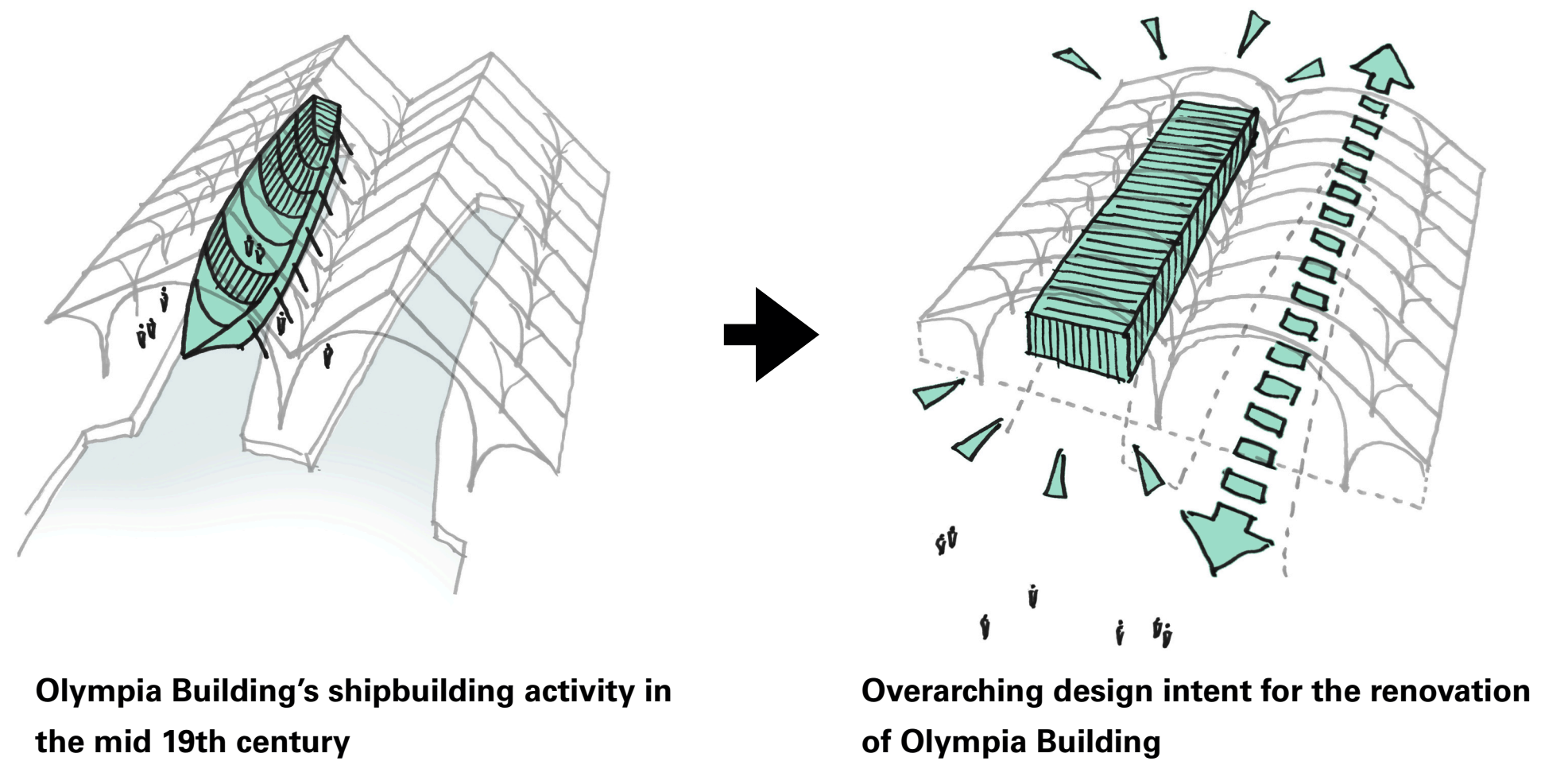
Convoys Wharf - Plot P07

Use and Adaptability



Site Plan - Access Points

The concept for the internal arrangement takes its cue from the activity and history of ship building that would have taken place under the slip covers of the original Olympia Building.



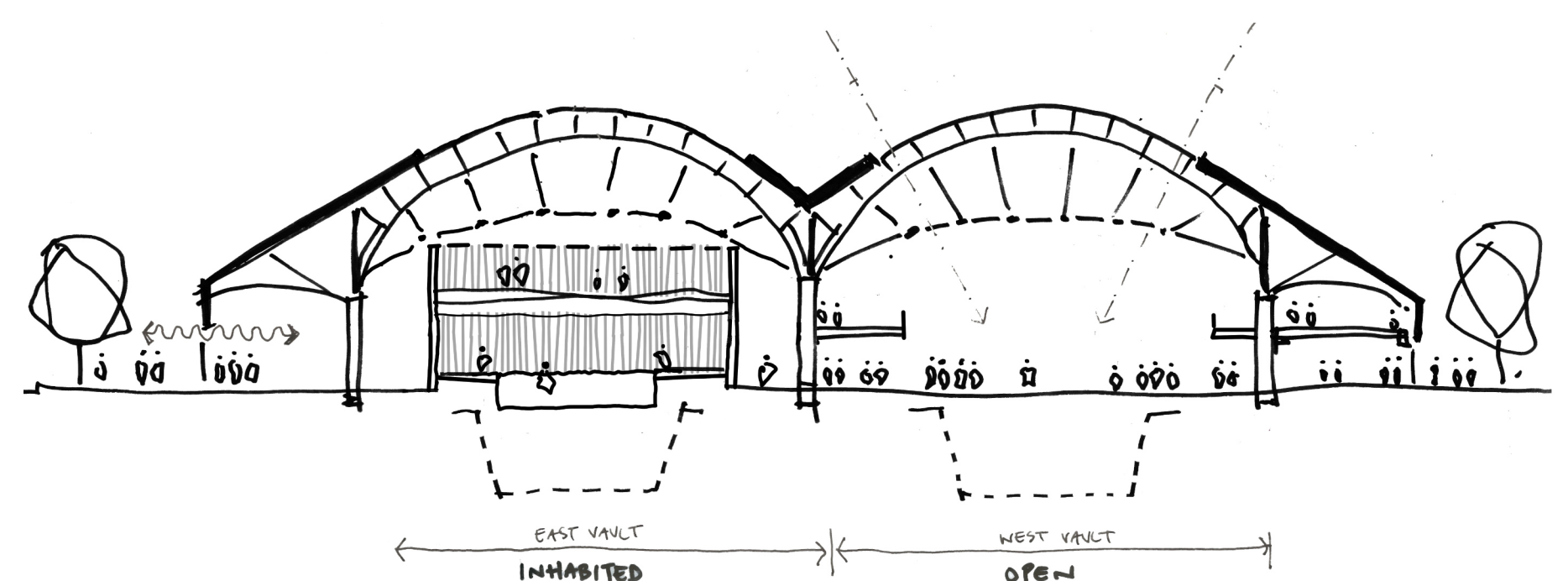
Olympia Building's shipbuilding activity in the mid 19th century

Overarching design intent for the renovation of Olympia Building



West Vault - Example of Flexible Use

The accommodation within the eastern vault is analogous to the construction of a ship awaiting completion. The placement of new structure and the open western vault allows the historic slip volumes to be appreciated as connected spaces.



West Vault - Market Hall Use

Convoys Wharf - Plot P07

Landscape & Public Realm

Olympia Square is central to the development physically, socially and historically. The space forms the linking feature for the extensive public realm and around which all routes and streets are organised. The provision of flexible cultural and commercial space within the Listed structure creates a unique focus to the whole development, whilst the creation of a important setting for the iconic building anchors the history of the site at the heart of the masterplan.



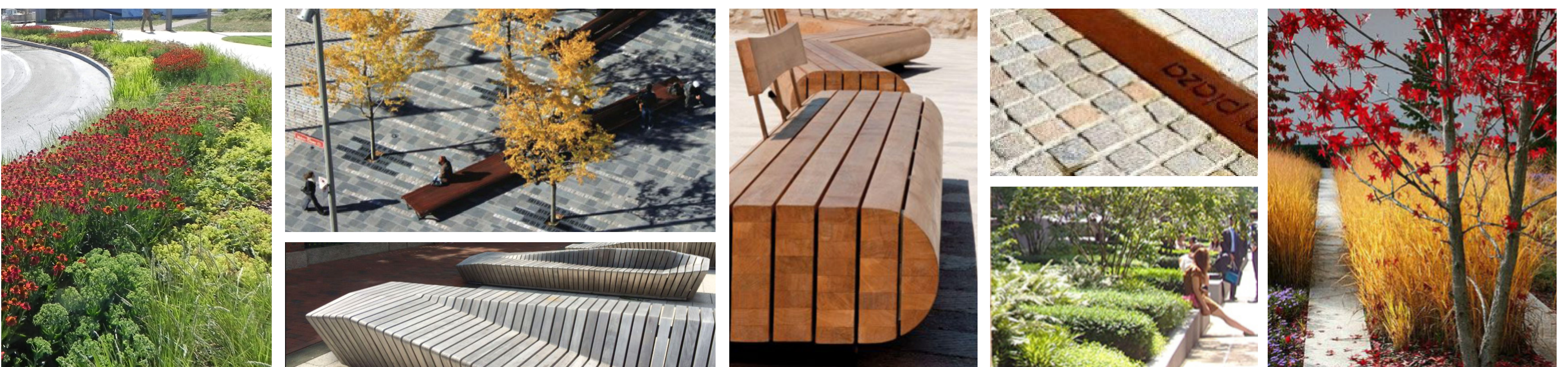
Impression from North Access to Olympia Square



Landscape Plan / Landscape Features

Key Landscape Principles

- A simple palette for design clarity and the use of high quality and robust materials.
- An inclusive provision for all users. This assists in formulating a sense of place as well as responding to particular access needs.
- Consistency in character with reference to the built form and history of the site.
- Furniture elements that will be robust, require low maintenance and be able to tolerate the demands of the public environment. Timber is used to create a tactile and comfortable surface.
- Perennial and seasonal planting to provide visual interest throughout the seasons.
- Ornamental multi-stem trees and feature shrubs to intimate garden areas.
- Larger trees to social spaces and stand alone trees.
- Upright trees as street and woodland specimens.



Landscape Materials and Planting

