

# Convoys Wharf Plot 12

Public Consultation 1

3 November 2020



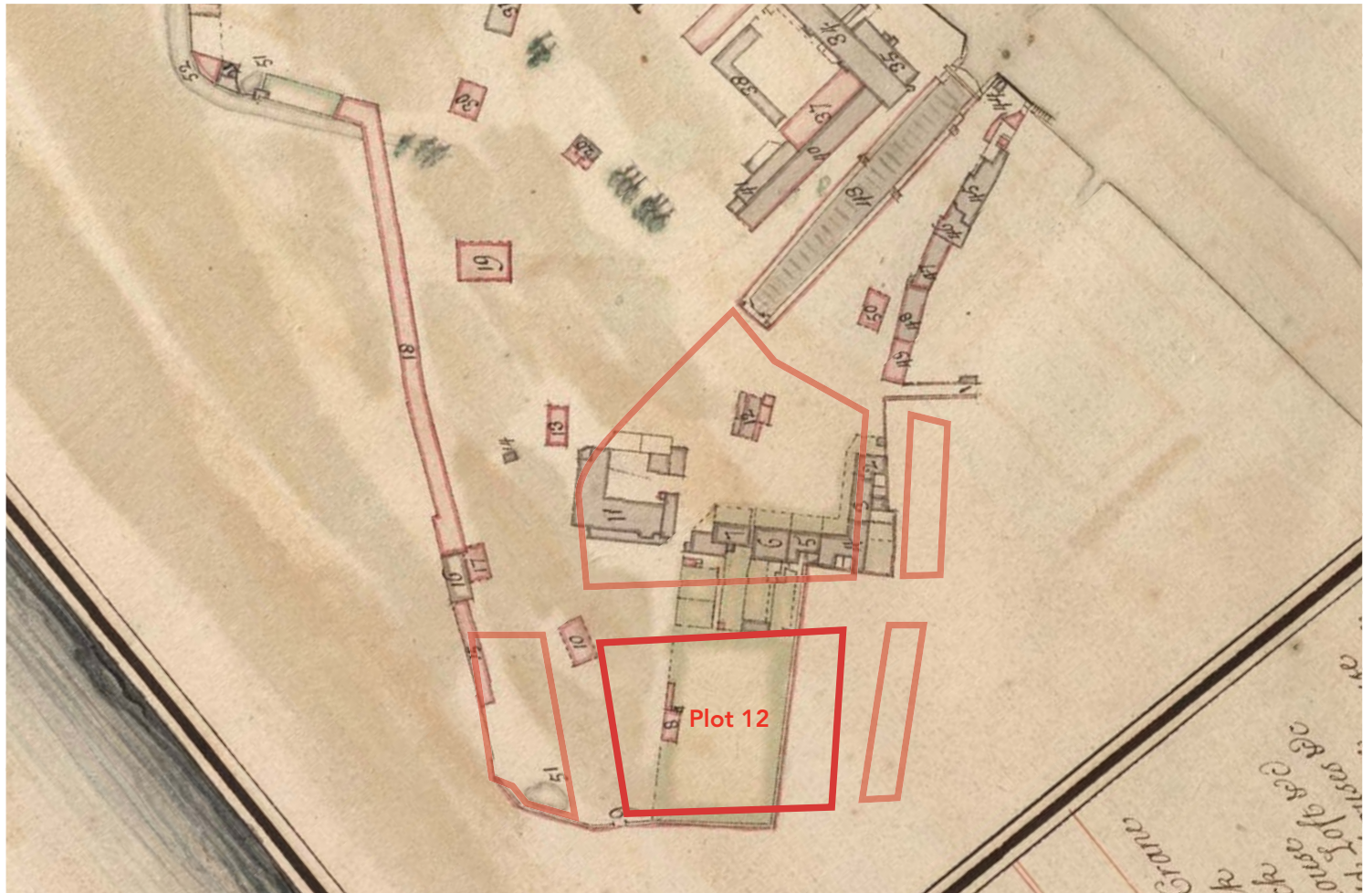
Heritage





# Stuart Dockyard (1603-1714)

- The gate at the south end of the yard was called the 'Southgate' in 1698



Indicative Plot 12 Boundary 



1698 Map



# Early Georgian Dockyard (1714-74)

- The gate at the south end of the yard was called the 'Sailfield Gate in 1715'
- The gate at the south end of the yard was called the 'Upper Gate in 1726'



↑ N  
Officer's Quarters   
Indicative Plot 12 Boundary 



1753 Milton Map

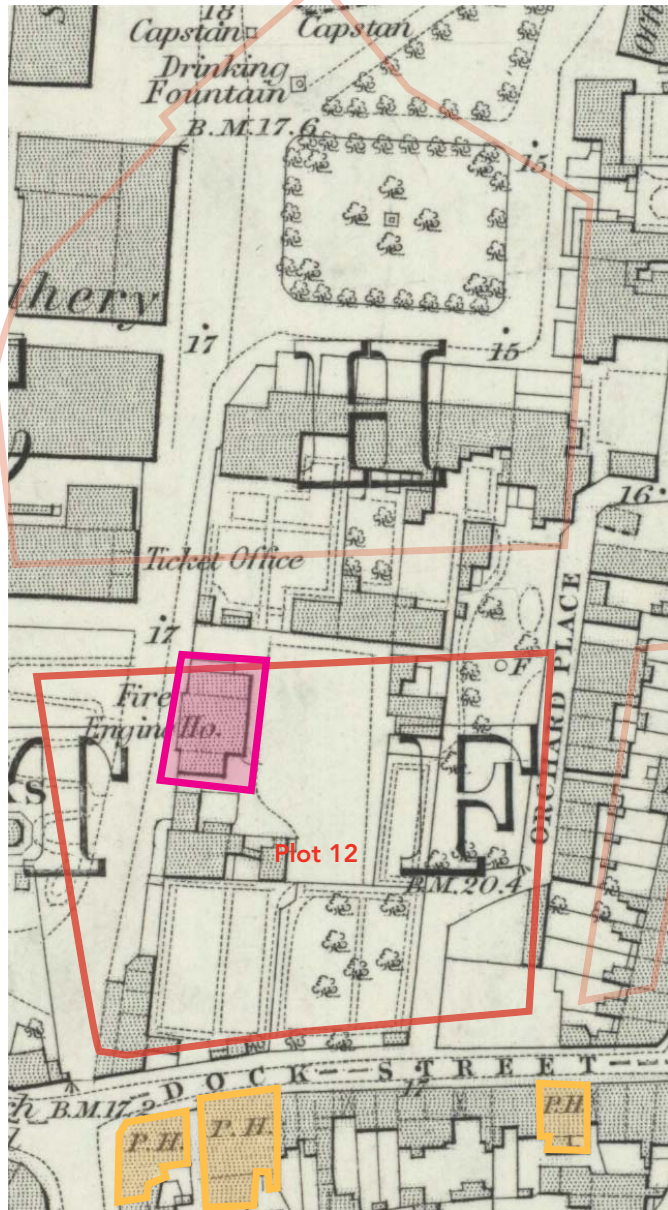


1774 Scale Model



# Georgian and Victorian dockyard (1774-1869)

## Georgian and Victorian Dockyard 1774-1869



1868 Map

Maps suggest Fire Engine house located at highlighted area. This was due to the dockyard largely comprising of timber buildings packed with flammable stores such as rope, tar, turpentine for work on wooden ships.

**1869**  
Closure of dockyard

## Foreign Cattle Market Late 19th - early 20th Century



1896 Map

**1871**  
Opening of Foreign Cattle Market

**1914**  
Taken over by the War Department for use as Royal Army Supply Warehouse / Depot.

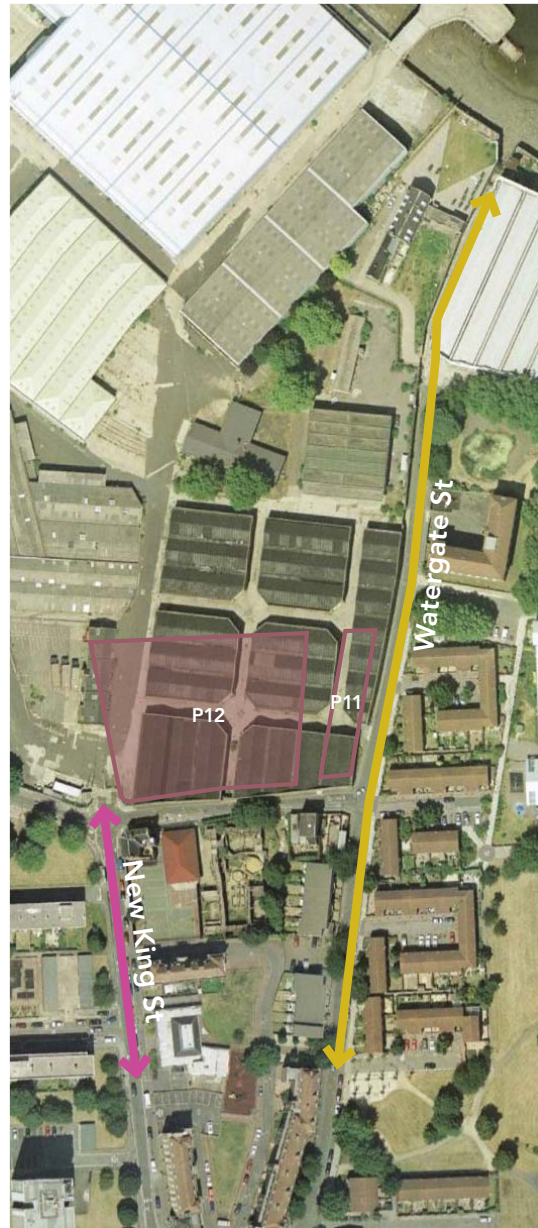
**1924**  
Purchased by War Office



# War years - Present



1945 Map



2003 Map



Present Day

## 1960s

Renamed the Royal Naval Stores Depot. The depot was the main air freight hub for the Royal Navy and was active during the Falklands War. It also continued as the Royal Navy Stationery warehouse.

## 1981

Depot closure and purchased privately for development.

## Present Day

The site has largely been cleared of its dockland warehouses with little trace left.





## Artefacts

## Excavation Area - (19th-20th Century)



- Tobacco pipe, glassware
- 18th Century Ceramics (Chinese porcelain, Dutch and Portuguese tin-glazed wares)
- 19th Century Ceramics (Plain creamware with blue transfer-printed pearlwares)
- Copper alloys - turn buckles, rivets, sheet metal, plaques, tags

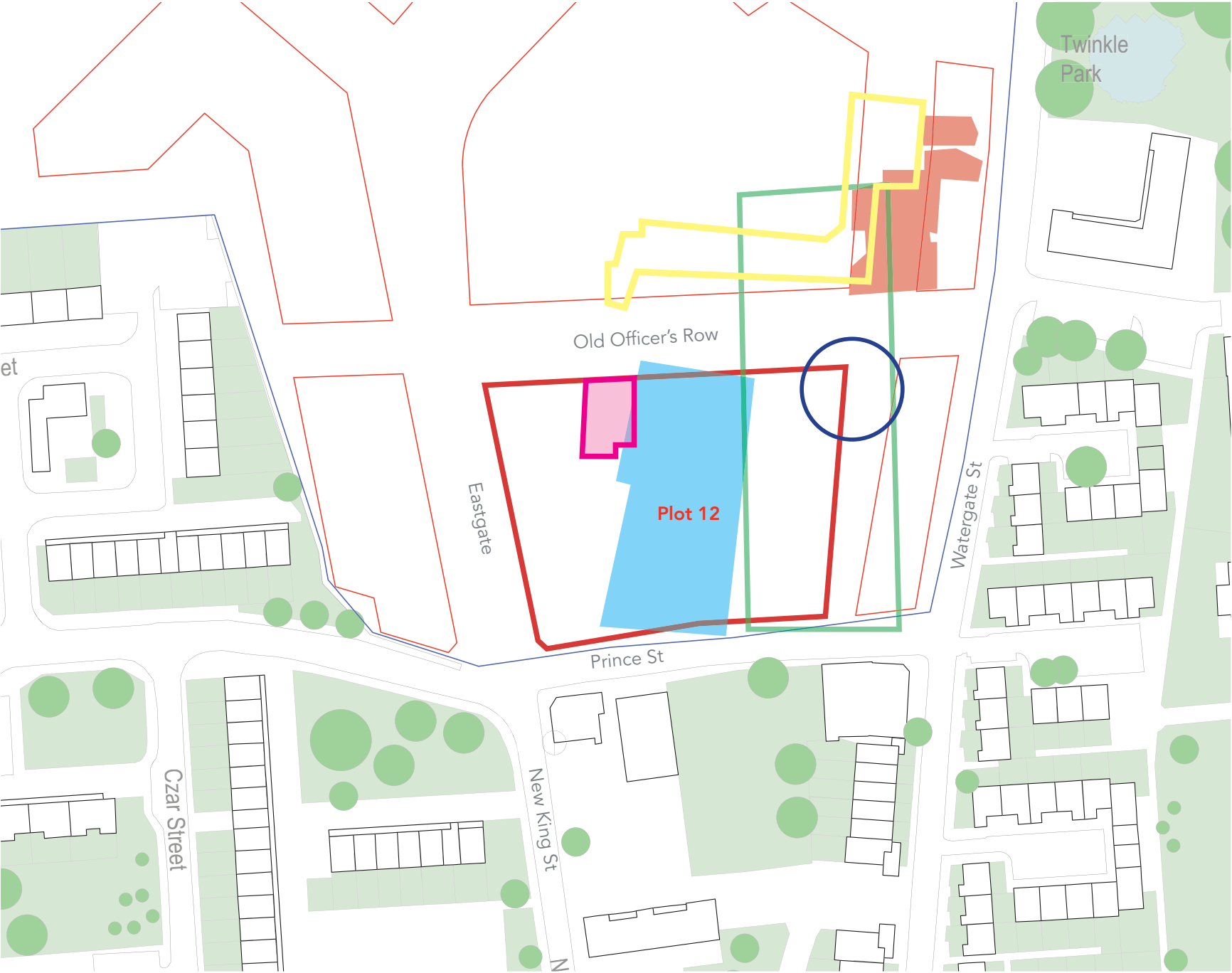
# Second World War Memorial



- The Deptford Dockyard suffered bomb damage during the Second World War. destroyed several structures and killed a number of men.
- After the war, memorial stones were created to commemorate the destruction sustained on the site during an air raid.
- The commemoration stones (above) were retained after the demolition of the brick buildings which used to occupy Plot 12.



# Indicative Historical Boundaries



Overlaid indicative boundaries as per historic maps and analysis on previous pages.

- Key:
- Memorial Stone
  - Excavation Area
  - Fire Engine House
  - Officer's Quarters
  - Sailfield
  - 1623 Orchard
  - Plot 12 Max Parameter

# P12 Initial Ideas



# Site Location





# Context Photos - Deptford High Street



1. Deptford High Street



2. Active Frontage on Deptford High Street



3. 2-4 New King St



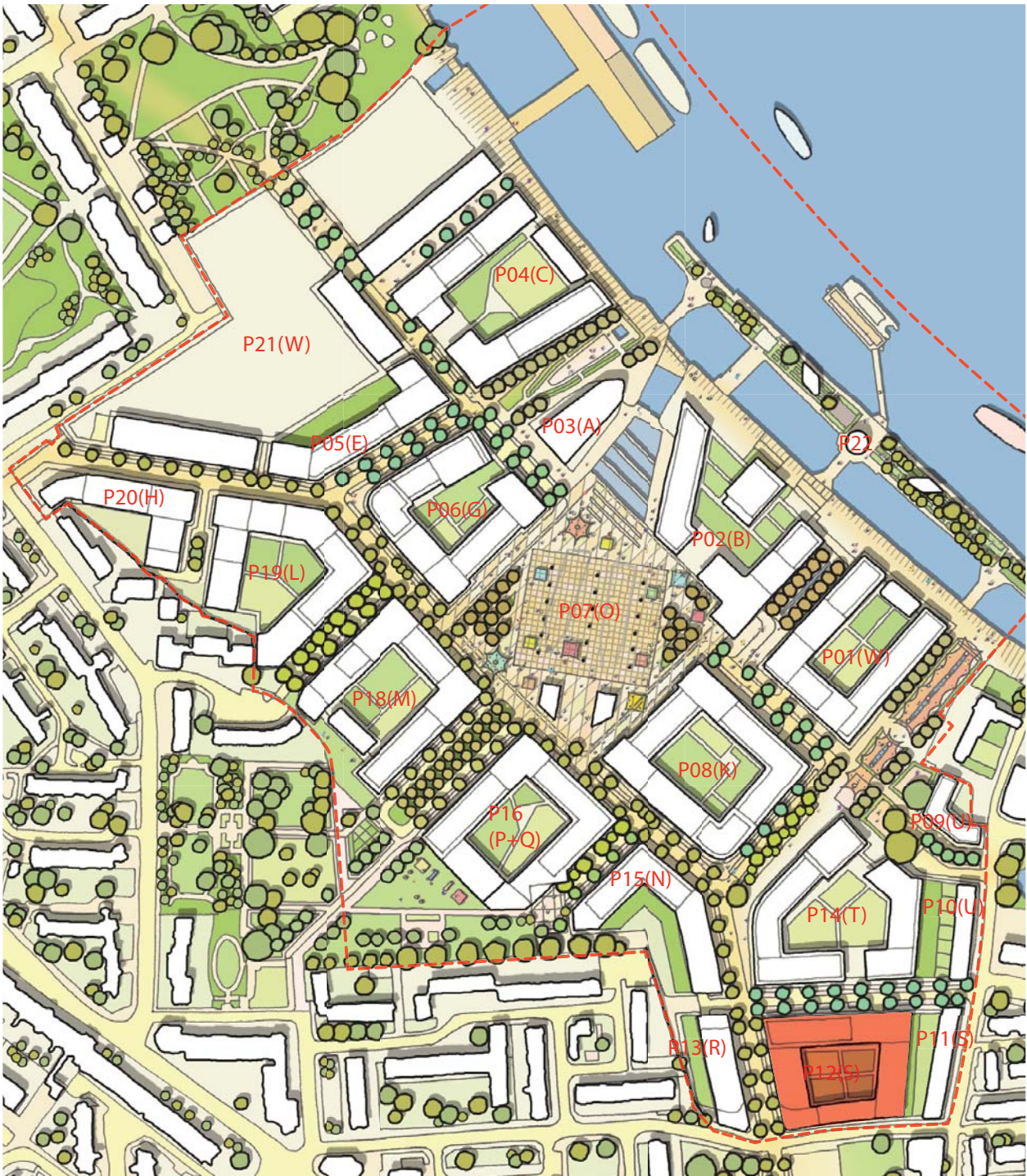
4. Local LCC Housing



5. Continuity and variation of the High Street

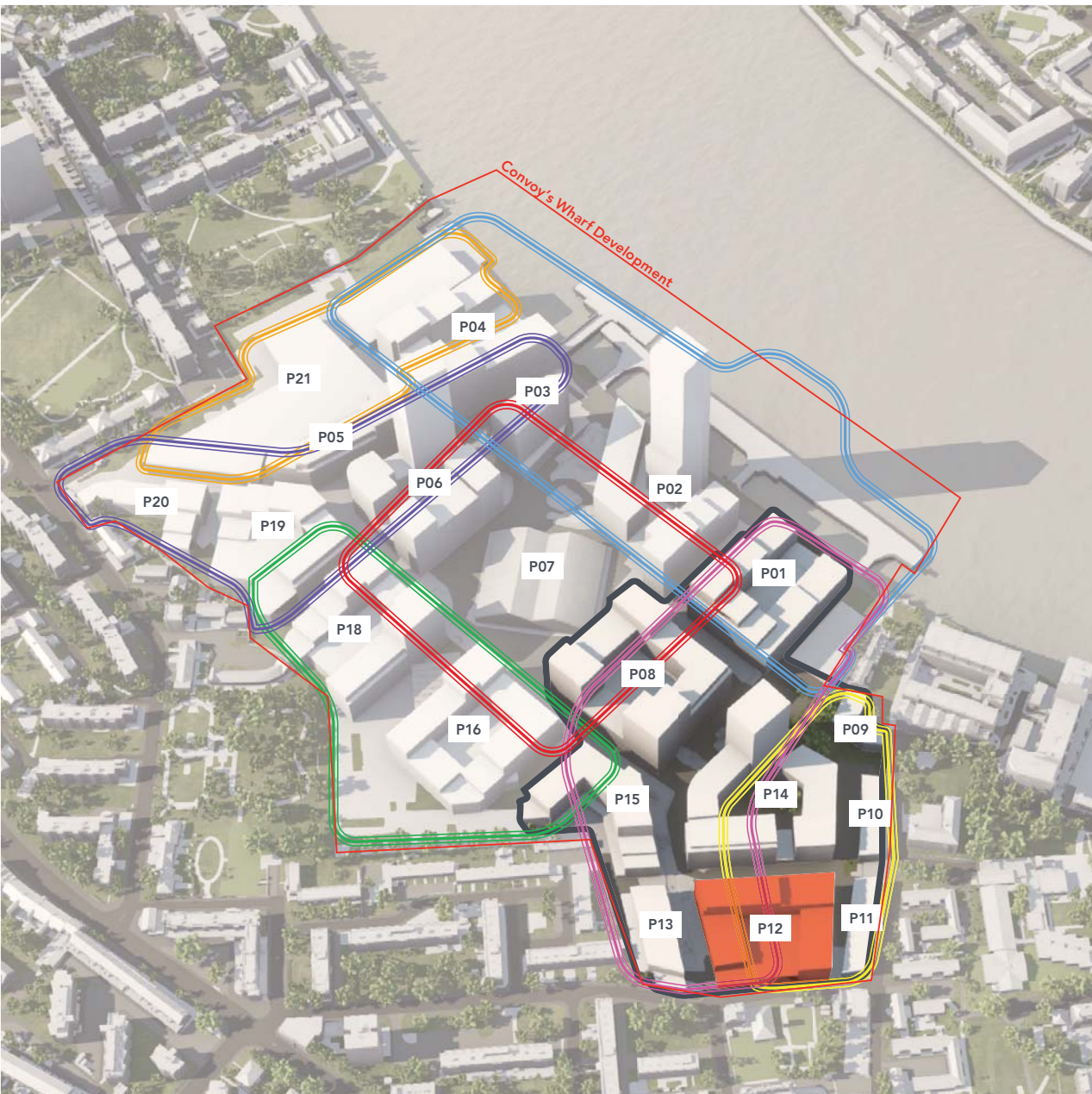


# Masterplan





# Character Areas



## Convoy's Wharf - Design Guidelines CW04

### □ Indicative Phase 1

Based on indicative drawings - Phase 1 currently comprises of the 9 plots as follows:

- P01, P08, P09, P10, P11, P12, P13, P14, P15

### □ Eastern Gateway

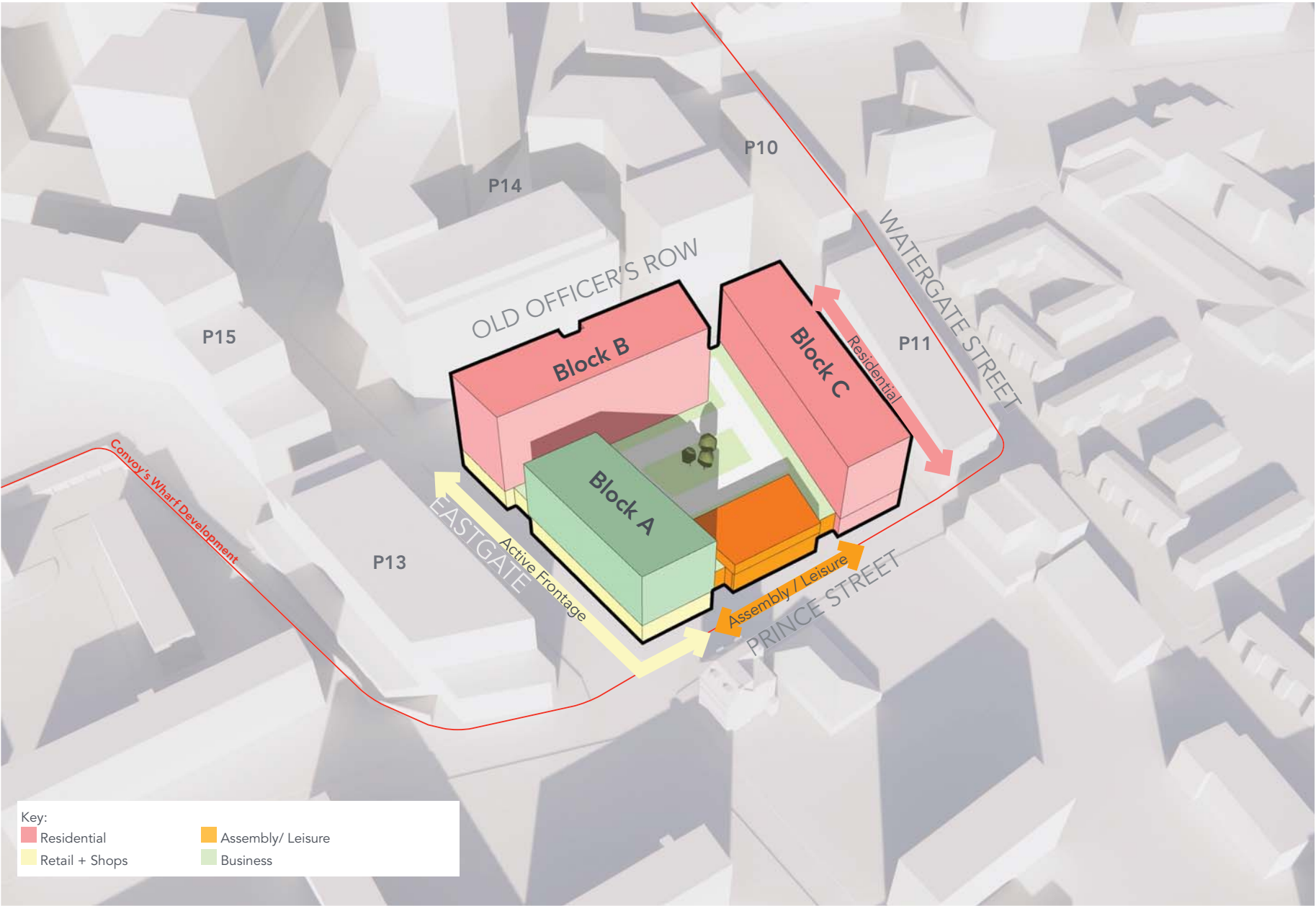
- To provide a gateway into the development from the south.
- To provide public realm for residents and visitors to the site.
- To enable a change in scale on the approach into the development.
- To provide facilities for cultural use within the public realm.

### □ Watergate

- Improve the street animation along Watergate Street.
- Provide a range of typologies.
- Provide play space.
- Provide transition in scale from existing residential units to the massing on site.



# Key Moves - Use



## Prince Street - Existing





# Prince Street - Concept Sketch



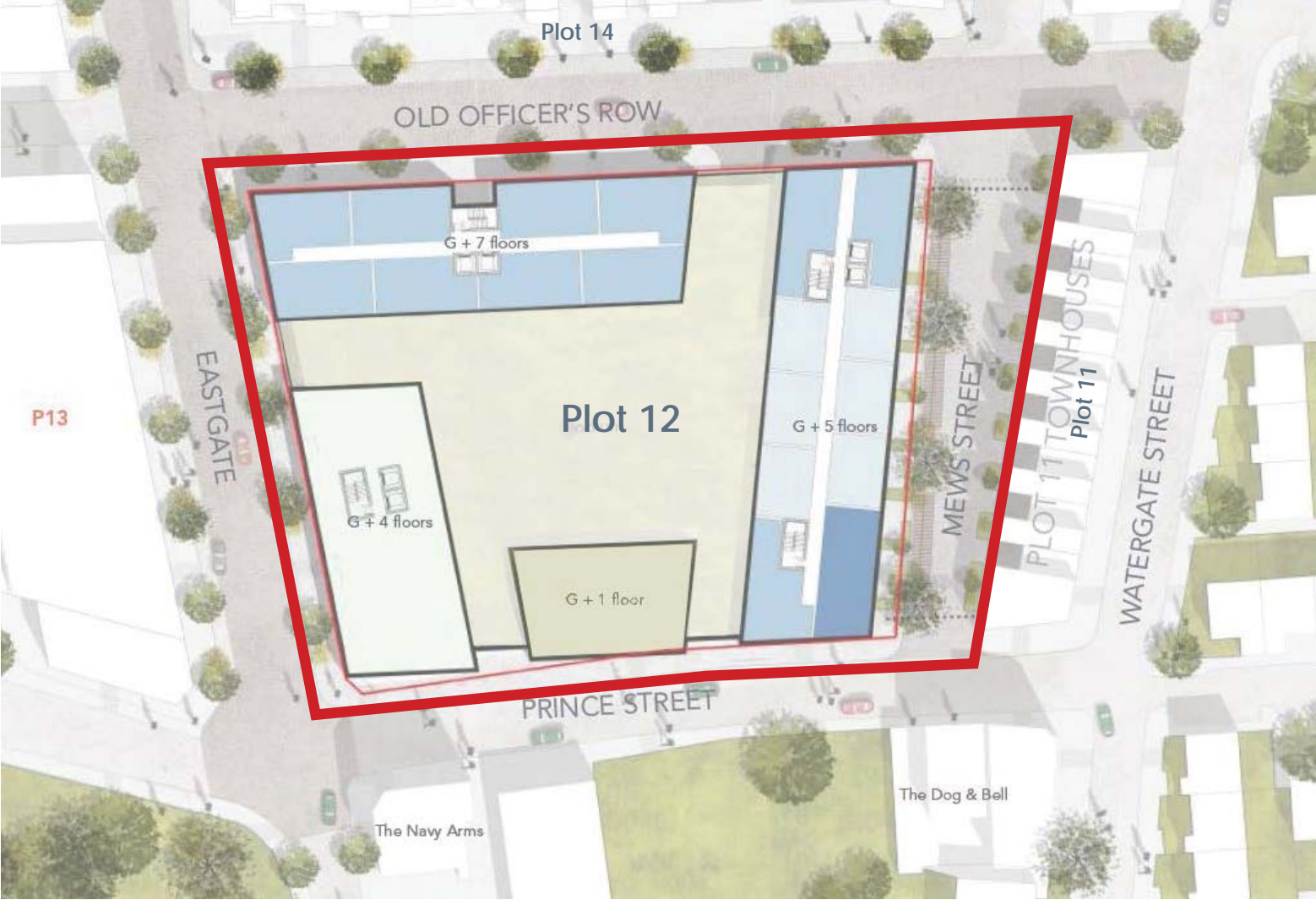
# Orchard Place - Concept Sketch



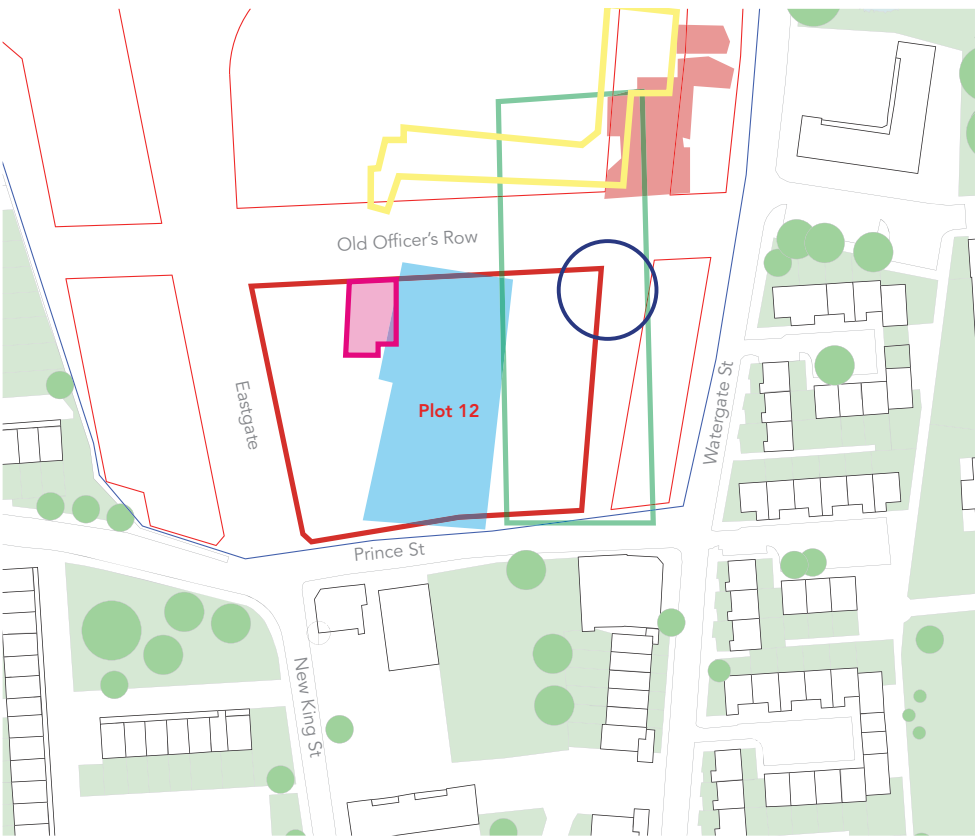


# PLOT 12: LANDSCAPE STRATEGY

---

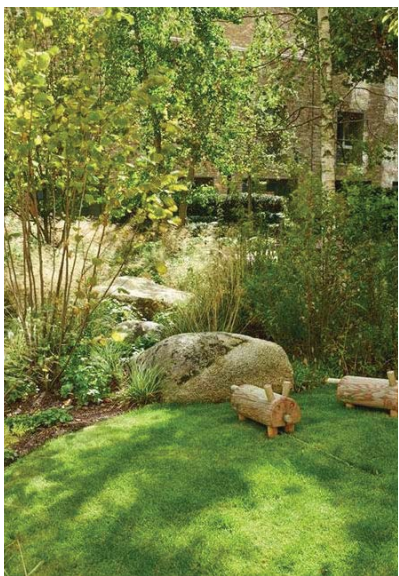


# HERITAGE OVERLAY



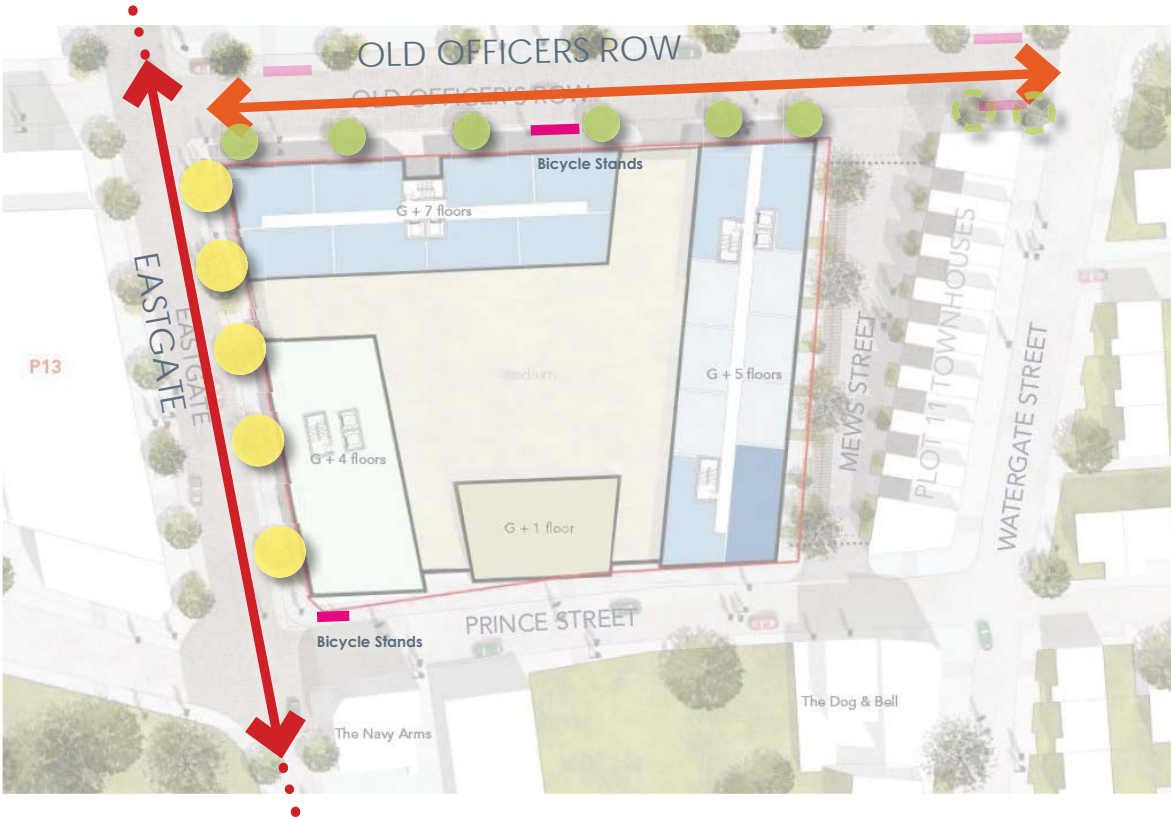
- Key:
- Memorial Stone
  - Excavation Area
  - Fire Engine House
  - Officer's Quarters
  - Sailfield
  - 1623 Orchard
  - Plot 12 Max Parameter

## REUSE, DISPLAY, INSPIRE, REMEMBER





# PROPOSED STREETS



**Eastgate**  
Primary road forming part of the site-wide street network; Large elm trees along the road draw on the site's ship building heritage.

**Old Officers Row**  
Residential scale street; unique character defined by the regimented box pleached trees and small scale block paving units.



Eastgate - Typical Section



## SCALE & CHARACTER DEFINED BY MATERIALS AND STREET TREES